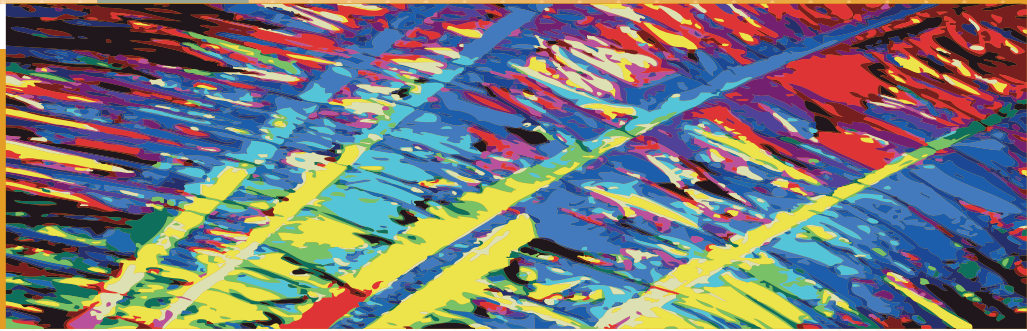


## INSIDE THIS ISSUE

NEWS	p.1
ARTICLES	
• Project CzechGeo/EPOS: the national initiative in the Czech Republic within the EPOS project	p. 1
• First EPOS workshop on legal and governance issues...	p. 2
IN EVIDENCE	p. 2
ANNOUNCEMENTS	p. 2



## NEWS

### EPOS @ ESF Research Conference on Understanding Extreme Geohazards

The European Science Foundation (ESF) in partnership with the European Cooperation in Science and Technology (COST) organize a conference providing the opportunity for leading scientists and young researchers to meet for discussions on the most recent developments in their fields of research. The conference will take place from 27 November to 2 December 2011 at Sant Feliu de Guixols, in Spain (<http://www.esf.org/activities/esf-conferences>) and EPOS is going to contribute to this challenging initiative.

### Eighth Plenary Session of the Group on Earth Observations (GEO-VIII)

The GEO-VIII Plenary and Exhibition will take place at the Istanbul Congress Center (ICC) located in the heart of Istanbul, the 16-17 November 2011.

EPOS will participate to this event in order to promote its contribution to the European Supersite Initiative as well as to publicize its goals to a broader community.

Jan Zednik, Pavel Hejda, Institute of Geophysics of the AS CR, Prague

### Project CzechGeo/EPOS: the national initiative in the Czech Republic within the EPOS project

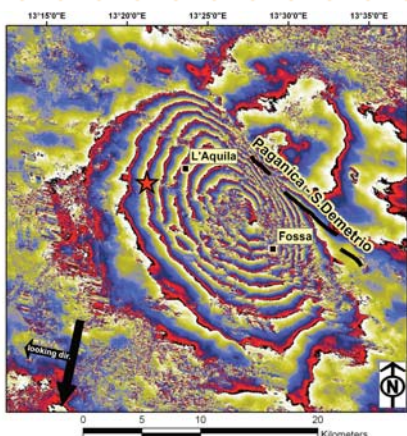
CzechGeo/EPOS is the distributed network of geoscience observations performed by research institutions and universities in the Czech Republic. The backbone of the project is formed by permanent stations (seismic, GPS, magnetic, gravimetric and geodynamic) involved in global networks which provide data mostly in real time. Permanent observatories are complemented by local stations in selected regions of interest. The third level of the observational system is formed by mobile stations which are deployed for repeated measurements or field experiments within various international projects. The following geoscience institutions are involved in the CzechGeo project: Institute of Geophysics of the Academy of Sciences of the Czech Republic, Prague (coordinating institution), Institute of Rock Structure and Mechanics AS CR, Prague, Institute of Geonics AS CR, Ostrava, Faculty of Mathematics and Physics, Charles University, Prague, Faculty of Science, Charles University, Prague, Institute of Physics of the Earth, Masaryk University, Brno, and Research Institute of Geodesy, Topography and Cartography, Zdiaby. Web pages of the project [www.czechgeo.cz](http://www.czechgeo.cz) contain links to all institutions and research infrastructures. They will serve in the near future as a data portal of seismic, magnetic, GPS and other geoscience data for the research community and the public.

Project CzechGeo was recognized by the Czech government as an important national research infrastructure and together with the other eleven research infrastructures (e.g. CESNET - Czech Academic Internet Network, or PALS - Prague Asterix Laser System) included in the Czech National Roadmap. Ministry of Education, Youth and Sports allocated for the CzechGeo project the annual support of 20 million Czech crowns (about 800K Euro) for the period 2010 - 2015. This funding represents a substantial contribution to the operational and personnel costs as well as hardware investments of geophysical, GPS and geodynamic networks in the Czech Republic. The involved

institutions formed the Consortium and signed the Consortium agreement.

The CzechGeo project could not be realized without close relation with the EPOS project. In fact, the funding is largely conditioned by active involvement of the Czech representatives in the Preparatory Phase of EPOS.

Geophysical observations on the Czech territory have a long tradition. A geomagnetic observatory was established in Prague - under the influence of Johann Gauss - already in 1839. The first relative pendulum measurements of gravity were carried out in the mines of Příbram in 1882 where also seismological experiments with two Wiechert seismographs took place in 1903 - 1905. In 1908, the seismological station began to operate permanently in Cheb in order to provide instrumental records of earthquake swarms occurring in the region of West Bohemia/Vogtland. Project CzechGeo/EPOS evinces that Czech geoscience institutions take up this tradition.



Castle Třešť, owned by the Academy of Sciences, is not only the venue of numerous international conferences but also the site of one of the stations of the Czech Regional Seismic Network.

## IN EVIDENCE

The EPOS contribution to the European Supersite initiative

The EPOS PP consortium is working to strengthen the collaborations between the communities involved in coordinating in-situ terrestrial observing systems and satellite Earth observations. The goal is to facilitate a synergic European contribution to the GEO Work Program 2012-2015. To these tasks EPOS proposed to create a Supersite Coordination Team that should facilitate and support the promotion of the supersite initiative in Europe by involving both scientists from the in-situ terrestrial and the satellite Earth observations communities.

Promoting the involvement of satellite Earth Observations in the EPOS PP integration plan can represent an essential step toward the realization of key services to users.

This is a timely initiative to allow for reliable scientific-based management strategies for solid Earth science and to guarantee its integration in the global and European landscape for Earth Science.

## ANNOUNCEMENTS

### • The EPOS PP Council Meeting

The Meeting of the EPOS PP Interactivity Preparatory Council (hereinafter the Council) will be held on November 9 and 10 in Utrecht (NL). This will be the first EPOS PP annual meeting and it will represent a fundamental opportunity for discussing the key outcomes achieved during our first year of activity. We are going to examine the deliverables and milestones accomplished so far, to assess the project management as well as to tackle challenging issues of relevance for the EPOS PP integration plan.

Particular attention will be given to the partner's involvement in the preparatory phase activities and to the partnership integration.

The Council will provide the first occasion to officialise the thematic working groups established in WP6 (Technical Work) and to verify the stakeholders' community involved in the project at this stage. We are going to accurately debate the RIs inventory and the e-infrastructure implementation plans.



First EPOS workshop on legal and governance issues. June 20 | 21 - 2011, Ercolano

## CONTACT

Silvia Filosa  
Alessandro Bartoloni  
Istituto Nazionale  
di Geofisica e Vulcanologia  
Via di Vigna Murata, 605  
00143 Rome | Italy

E: newsletter.epos@ingv.it

T: +390651860652 | 636

### First EPOS workshop on legal and governance issues: when scientists and legal experts discuss together on the Future EPOS Infrastructure

What a better place than the "Osservatorio Vesuviano" to hold the first EPOS workshop on legal and governance issues during the 20th and 21st of June 2011?

At invitation of Agata Sangianantoni, lawyer at the INGV branch in Naples and of Massimo Cocco, the coordinator of the project (both from Italy), the partners leading the legal and governance work in the EPOS PP project (respectively Alice Clemenceau and Elisabeth Kohler from CNRS (France) and Russ Evans from NERC, UK) convened experts from partner organisations (Czech Rep., Greece, Norway, Portugal, Sweden) to discuss how a legal and governance frame could best suit the scientific requirements of EPOS. Altogether, eight countries were represented.

The first part was dedicated to the current status of the integration of EPOS in the national research infrastructures roadmaps and the need for the scientific community to further promote EPOS among the national stakeholders.

An overview of the first results of the legal enquiry carried through between March and June was then presented. Even though some answers to the questionnaire are still missing, it appears that several partners already have experience with European infrastructures and that no specific legal constraints were identified.

Concerning the potential legal structure for the future EPOS RI, several possibilities were reviewed: national legal structures (the Italian Società Civile as for the Sincrotrone Trieste, the French Société Civile as for SOLEIL, UK's Company Limited by Guarantee as for SKA), international organisation (as for CERN, ITER) or the ERIC (European Research Infrastructure Consortium, a new European legal status especially devoted to European RI). Given the outcome of the first discussions and without excluding any other option, it was agreed to further investigate the possibility to set up an ERIC which would provide a real European label to EPOS. These considerations are deeply intertwined with questioning on the governance framework of the future EPOS

RI: which should be the governing bodies, how to ensure a strong representativeness while keeping things manageable, how to best reflect interdisciplinarity, what structures and services should be pooled together?

A very fruitful discussion started then on the topology of the infrastructure, i.e. what component of EPOS should be integrated and what should stay at the periphery. In order to go ahead with this question, a lot of scientific and institutional work remains to be done. There is a call for more integration in the national networks; it is indeed fundamental to get a comprehensive overview of what the core structure of EPOS should include. This will be done in parallel with a global reflection on the overall organisation of the EPOS infrastructure: what should be the regional nodes and the thematic nodes; how do they interact with each other; how are they related to the headquarters and to the EPOS users' platform?

It is extremely important to keep in mind that legal and governance work are there to accompany the scientific work. The final objective is to tailor a Research Infrastructure that answers its users' needs in the best possible way.

A comprehensive overview of the EPOS Collaborative area was also offered and persons participating into EPOS were strongly encouraged to have recourse to the services of this efficient tool. Last but not least, it must be recognized that the discussion was indeed strongly facilitated by a warm welcoming buffet and a breathtaking view over Naples' Bay. No doubt the participants were also inspired by the visit of Herculaneum's ruins still subsisting after thousands of years, unless such enthusiasm came from the glasses of Fiano savored Piazza del Plebiscito!



Mount Vesuvius | © INGV